

## WASSENBURG® Process Manager

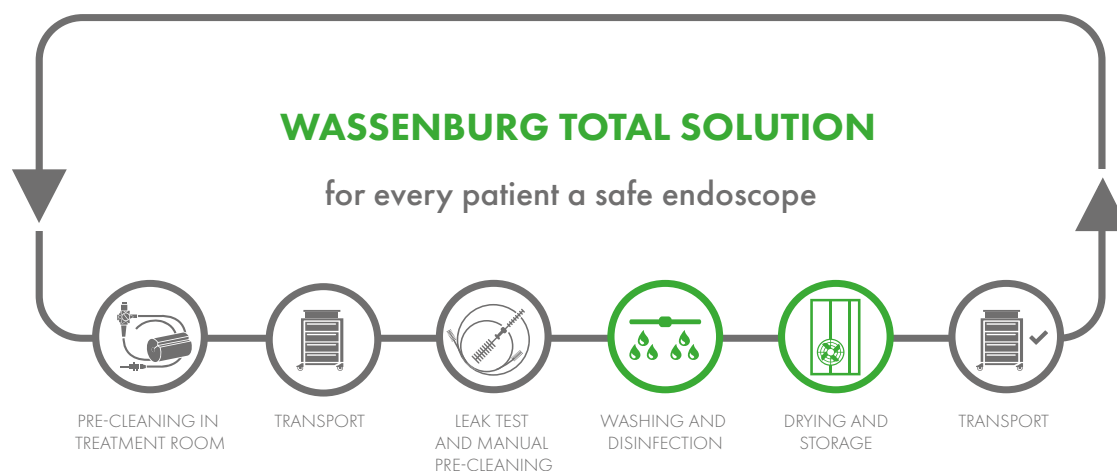
Ensuring traceability compliance & providing insights



## TOTAL SOLUTION

### TOTAL SOLUTION

A clean and disinfected endoscope is an important prerequisite to ensure safety for every patient and each procedure. Therefore, we offer a complete range of systems, consumables and services covering the entire endoscope reprocessing cycle: the total solution. Process Manager software collects and registers the process data during both the washing and disinfection and the drying and storage stage of endoscope reprocessing.



### FOR EVERY PATIENT A SAFE ENDOSCOPE

Our Wassenburg Process manager II & Process manager II<sup>plus</sup> registration and traceability software is designed to support the user in achieving compliance with applicable quality systems. Process Manager software also enables the analysis of the collected process data to provide the user with valuable insights into their reprocessing equipment.

### BENEFITS OF WASSENBURG® PROCESS MANAGER

- Enables traceability compliance
- Detailed process reporting
- Management tool
- Real-time monitoring
- Quick insights into daily operations



## REPORTING & COMPLIANCE

### ENABLES TRACEABILITY COMPLIANCE

Data is critical to control standards of care. Process Manager collects process data for the lifespan of the equipment which supports a comprehensive traceability functionality. Not only does the digitalization of process data improve traceability efficiency, it also supports compliance with applicable quality systems.

More specifically, Process Manager registration and traceability software makes it possible to link every endoscope with every patient that came into contact with it, as well as the products that were used in the washer-disinfector and drying cabinet during the reprocessing cycle.

### DETAILED PROCESS REPORTING

Process Manager software allows for the permanent monitoring of the washer-disinfector and drying cabinet as well as their respective process status. All process records are presented in clear and detailed reports, thus providing a complete overview of the steps that occur during a process.

The process report for the washer-disinfector details relevant information about process chemicals and internal filters used during a specific reprocessing cycle, such as batch number and expiry date. It provides a complete overview of all relevant information in support of traceability, containing information about the endoscope, the user operating the equipment, the specialist and the patient that last came into contact with the endoscope.

The report for the drying and storage cabinet details information about the endoscope, linking it to the previous washing and disinfection process, the user who loaded and unloaded the endoscope, machine settings and further process details.

### PROCESS MANAGER II & II<sup>PLUS</sup>

There are two versions of Process Manager, namely PM II and PM II<sup>plus</sup>. The two Process Manager versions differ in certain functionalities and the applicable version is dependent on machine combination.\*

\* Please contact your local WASSENBURG® supplier for more information.

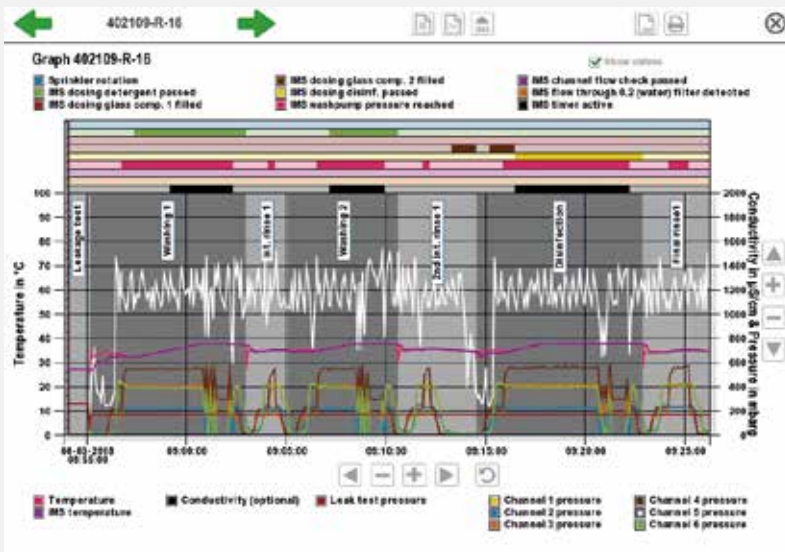
# MANAGEMENT TOOL

## MANAGEMENT TOOL

By collecting and storing relevant process data, Process Manager can be used as an effective management tool. Process Manager can also be used as a tool to manage equipment and endoscope maintenance, monitor utilization of the reprocessing equipment or endoscope, manage user levels and user rights as well as transform insights in user actions into personalized user learning curves. These meaningful statistics and further analysis of the data provides an understanding into crucial activities that can help to further optimize endoscope reprocessing operations.

## REAL-TIME MONITORING IN THE WASHER-DISINFECTOR

A detailed process graph reports in real-time what is happening during a reprocessing cycle. This invaluable tool provides detailed information about the state of the endoscope and is used as a monitoring tool during maintenance activities.



## QUICK INSIGHTS

The (personalized) filters can be used to selectively search for specific information in Process Manager. For example, it is possible to generate a quick overview of all processes of the last 24 hours, with a single click of the mouse.



## INSTALLATION & REQUIREMENTS

Process Manager II and Process Manager II<sup>plus</sup> fulfill the international guidelines that prescribe the need for registration and traceability. Please contact your WASSENBURG® supplier for local guidelines.

### WASSENBURG® PROCESS MANAGER II AND PROCESS MANAGER II<sup>PLUS</sup>

#### Minimum server-system requirements

Processor	Duo Core 2GHz+ CPU
Operating system	Windows server 2008 R2 sp1 (64 bits), 2012, 2012 R2 or 2016 with latest Windows update installed
Internal memory	Min. 4 GB
Web browsers	Microsoft Internet Explorer ≥ 9, Firefox ≥ 27, Safari ≥ 5, Google Chrome ≥ 64

#### Minimum workstation requirements

Processor	PC with Intel T1350 processor comparable or higher
Internal memory	2 GB
Web browsers	Microsoft Internet Explorer ≥ 9, Firefox ≥ 27, Safari ≥ 5, Google Chrome ≥ 64
Display	Super VGA (1024x768) or higher resolution video adapter and monitor
User interface	Keyboard and mouse or compatible pointing device

#### Minimum network requirements

IP addressing	The servers must use a fixed IP address or hostname, so that the workstations can always access this address (hostname or IP) via the web browser. Port 80 will be used to serve the web interface client.
---------------	--

Full installation requirements are specified in the Process Manager II and Process Manager II<sup>plus</sup> pre-installation guide.

### Contact information

Wassenburg Medical B.V.  
Edisonring 9  
6669 NA DODEWAARD  
THE NETHERLANDS

T: +31 (0) 488 700 500  
F: +31 (0) 488 453 685  
info@wassenburgmedical.nl  
www.wassenburgmedical.com



Wassenburg Medical, a member of the Hoya Corporation, is a world leading company specialised in the development and manufacture of innovative products and services to optimise the process of endoscope reprocessing. We are continuously expanding our business and product portfolio and have a highly experienced international distribution network. Please visit our website for further information.

© Copyright 2018. Subject to alterations.